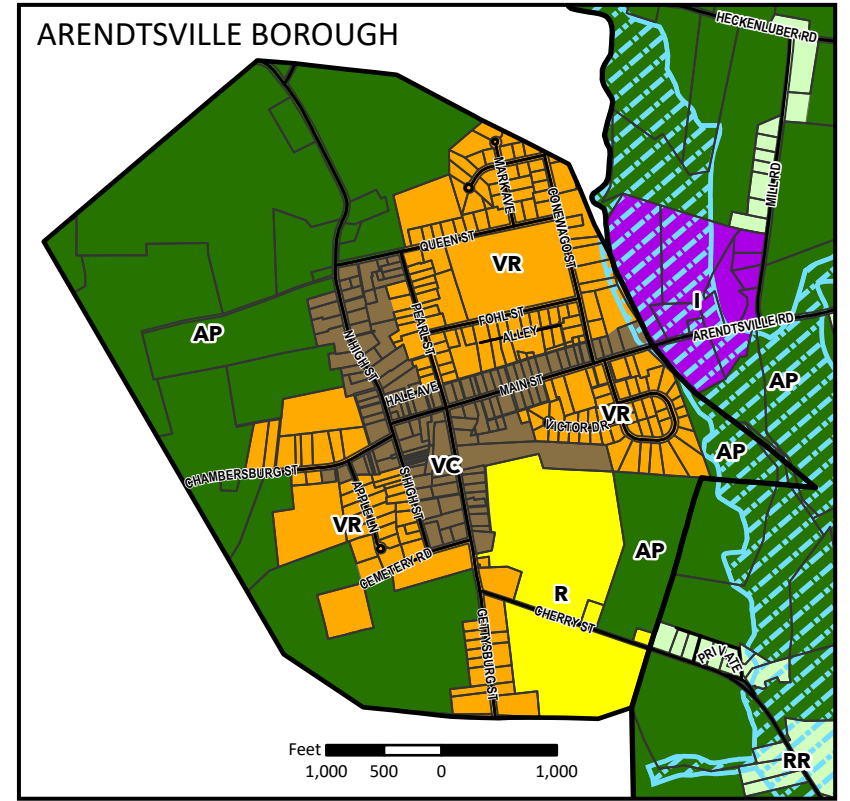
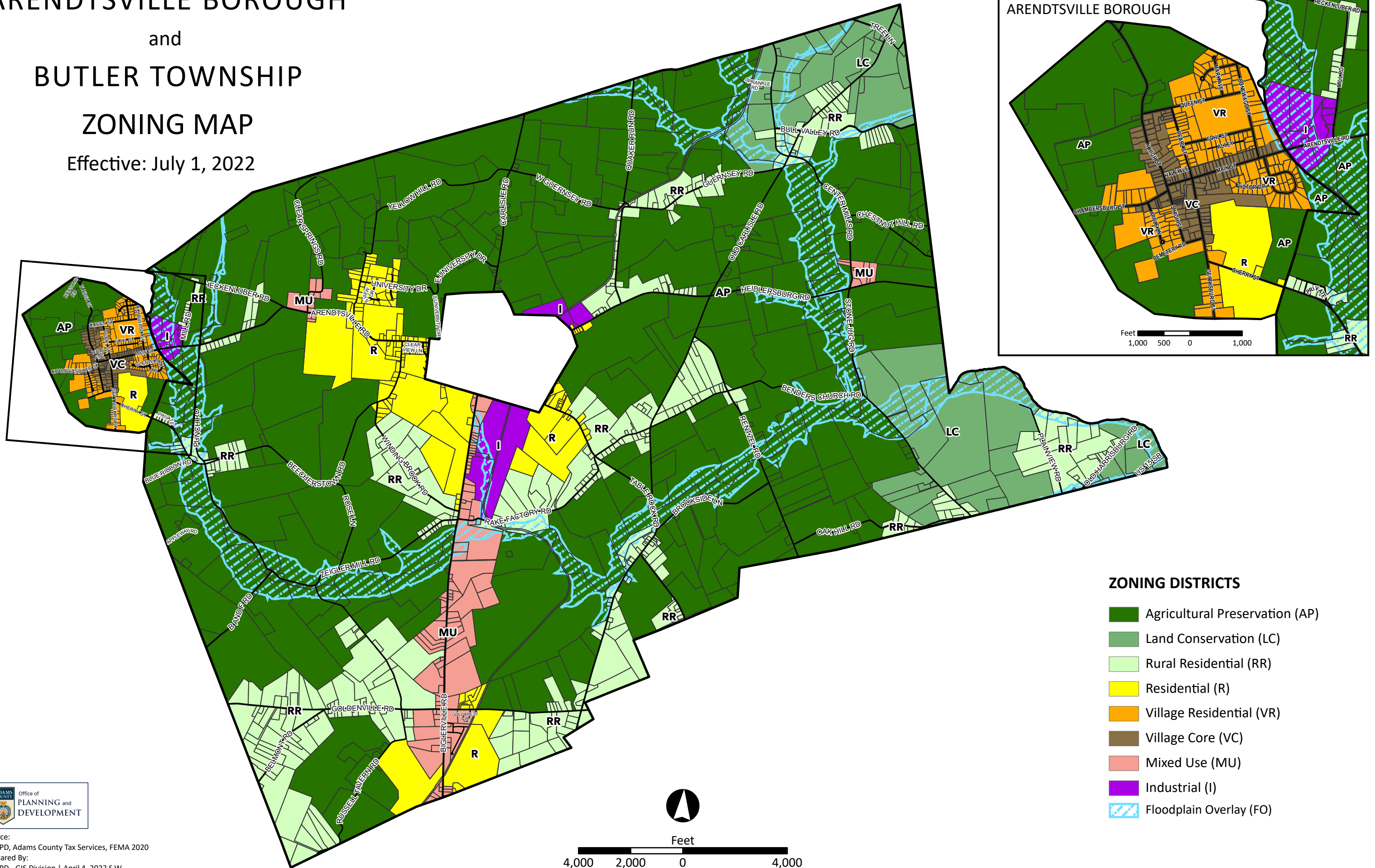


ARENDSVILLE BOROUGH and BUTLER TOWNSHIP ZONING MAP

Effective: July 1, 2022



ZONING DISTRICTS

- Agricultural Preservation (AP)
- Land Conservation (LC)
- Rural Residential (RR)
- Residential (R)
- Village Residential (VR)
- Village Core (VC)
- Mixed Use (MU)
- Industrial (I)
- Floodplain Overlay (FO)



Source:
ACOPD, Adams County Tax Services, FEMA 2020
Prepared By:
ACOPD - GIS Division | April 4, 2022 S.W.

